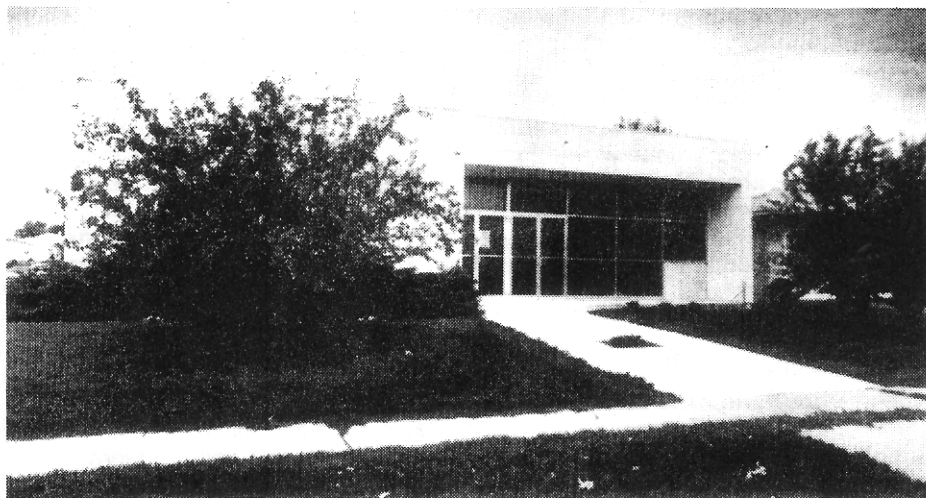


Woodfield Jewish Congregation

6800 South Pine Tree Lane

Hanover Park, Illinois



Ceremonies of Dedication

SUNDAY, OCTOBER 5, 1975

30 TISHREI 5736

"Strength and Beauty are in His Sanctuary"

— Psalm 96

Dedicatory Message From Our Rabbi

It is significant that Jewish tradition charges us to have a "Chanukat Ha'bayit" dedication for our personal houses and our houses of worship. A building, in and by itself, is an empty structure. Once dedicated, however, it takes on purpose and direction. It is thereby given a *raison detre* and is charged with compelling responsibilities and challenging burdens.

We of the Woodfield Jewish Congregation are now becoming trustees of the responsibilities and burdens that this House of God now assumes. We have a responsibility to see to it that the wisdom, heritage and the teachings of our sacred tradition assume a place of primacy within the portals of this edifice. The synagogue must be the place where children and adults alike are afforded the opportunity to become immersed in a mature and compelling faith and culture. We are charged with the privilege of making this Congregation a center of Jewish concern; concern, not only for the important synagogue projects and activities that this structure will house, but also a burning concern for the entire house of Israel, for Zion, "the foundation of our lives," for our brothers and sisters in Soviet and Arab lands and for important community needs which will assure our peoples' survival.

Most importantly, however, our new structure is charged with being a House of God, a vehicle through which man and God confront each other through prayers and study and the deeds of loving kindness.

May we of the Woodfield Jewish Congregation be worthy of this sacred task now entrusted to us.

NORMAN KLEINMAN, Rabbi

A Message From Our President

Welcome to Woodfield Jewish Congregation. Our sincere thanks for coming to help us dedicate our new building.

We have reached a new plateau. It was most gratifying after all of the effort during these past few months to attend High Holiday Services in our own building. It is elating also to have over 100 children attending religious school.

I must use this space however to express my gratitude to a few people that made our efforts to establish a Conservative congregation in the area possible:

Marshall Wolke, President, and Chana Rosen, Executive Director, of the Midwest Region of the United Synagogue of America, who gave us so much support and assistance when we really needed it.

Howard Emmerman, First Vice-president of the congregation, who after months of searching found this building and arranged its purchase and financing.

William Christensen, president of the First State Bank of Hanover Park who convinced his loan committee that our synagogue would succeed in this area and would repay a mortgage to be held by the bank.

Rabbi Norman Kleinman, who came to work; to help build Woodfield Jewish Congregation into that synagogue which would appeal to the residents of our area. His ideas are working.

The members of WJC are grateful for your support and hope that you will find time to join us on future occasions.

JOEL L. RUBEN, President

Congregation Officers

RABBI NORMAN KLEINMAN

CANTOR GARY SHERMAN

JOEL RUBEN	President
HOWARD EMMERMAN	First Vice President
MARSHA BARENBAUM	Second Vice President
BARBARA HENRY	Third Vice President
ALBERT GOLDBERG	Financial Secretary
JOSEPH RIVKIN	Treasurer
ONA GINTZLER	Corresponding Secretary
DENISE MAYOFF	Recording Secretary
ELLIOTT M. GORDON	Parliamentarian

Members At Large

Gerl Gurowitz
Gary Sherman

Jerry Taitel
Lloyd H. Weston

Board of Directors

ARTHUR REISMAN	Education
STEVEN LEVINE	Youth
CLIFFORD KELMAN	Membership
LARRY COHEN	Ways & Means
MICHAEL TUTT	Housing
SAMUEL BARENBAUM	Ritual
EMILY SHEVICK	Bulletin
MAXINE SUTTON	Publicity
NANCY KRAMER	Social Action
PAMELA BERNGARD	Sisterhood
DENNIS SHAPIRO	Men's Club

Past Presidents

MELVIN BUDISH
1971-73

DAVID MANNING
1973-74

Dedication Program

WELCOME Elliott M. Gordon
Chairman, Dedication Committee

DEDICATORY VERSES
And let them make Me a Sanctuary that I may dwell among them.
Enter His courts with thanksgiving and into His gates with praise.
Seek ye the Lord and live.

MA TOVU Cantor Gary Sherman

INVOCATION Rabbi Hillel Gamoran,
Beth Tikvah Congregation
Hoffman Estates, Illinois

Procession of Torah

OPENING OF ARK Joel Rivkin
Treasurer, Woodfield
Jewish Congregation

SOUNDING OF THE SHOFAR Sam Barenbaum
Chairman, Ritual Committee

PROCESSIONAL Officers of Woodfield
Jewish Congregation

אָנאָ ייִ הוֹשִׁיעָה נָא. אָנאָ ייִ הַצְלִיחָה נָא:

אָנאָ ייִ עֲנֵנוּ בַיּוֹם קָרְאָנוּ:

אֱלֹהֵי הַרוּחֹת הוֹשִׁיעָה נָא: בִּיתְּךָ לְקַבּוֹת הַצְלִיחָה נָא:

גּוֹאֵל חֶזֶק עֲנֵנוּ בַיּוֹם קָרְאָנוּ:

דובר צדקות הושיעה נא: הדור בלבוישו הצליחה נא:
 ותיק וחסיד עגנו ביום קראנו:
 וך וישר הושיעה נא: הומל דלים הצליחה נא:
 טוב ומטיב עגנו ביום קראנו:
 יודע מחשבות הושיעה נא: כביר ונאור הצליחה נא:
 לובש צדקות עגנו ביום קראנו:
 מלך עולמים הושיעה נא: נאור ואדיר הצליחה נא:
 סומך נופלים עגנו ביום קראנו:
 עוזר דלים הושיעה נא: פודה ומציל הצליחה נא:
 צור עולמים עגנו ביום קראנו:
 קדוש ונורא הושיעה נא: רחום וחנון הצליחה נא:
 שומר הברית עגנו ביום קראנו:
 תומך תמימים הושיעה נא: מקיף לעד הצליחה נא:
 תמים במעשיו עגנו ביום קראנו:

KI MITZIYON — מירושלים: מירושלים:
 Cantor and Congregation ברוך שנתן תורה לעמו ישראל בקדשתו:

DEDICATORY PRAYER Rabbi Leo Wolkow
 Temple B'nai Yeauda
 Homewood, Illinois

SHEMAH YISRAEL — שמע ישראל יהוה אלהינו יהוה אחד:
 Cantor and Congregation אחד אלהינו גדול אדונינו קדוש שכו:

INSTALLATION OF TORAH SCROLLS Albert Goldberg,
 Howard Emmerman

KEY LEKAH TOV — כי לקח טוב נתתי לכם תורת אלהינו:
 Cantor and Congregation עיניים היא למחזיקים בה ותמכה מאשר:
 דרכיה דרכי נועם וכל נתיבותיה שלום:
 השיבנו יי אלך ונשובה חדש ימינו בקדם:

CLOSING OF ARK Dennis Shapiro
 President, WJC Men's Club

REMARKS Rabbi Norman Kleinman
 GREETINGS Joel L. Ruben
 President, Woodfield Jewish Congregation
 SIM SHALOM Cantor Gary Sherman
 GREETINGS Adolph A. Brown
 Vice President,
 United Synagogues of America
 GREETINGS Hon. William A. Redmond
 Speaker, Illinois House of Representatives
 GREETINGS Hon. Eugenia S. Chapman
 Representative, 3rd Legislative District
 GREETINGS Morris D. Wolf
 Trustee, Village of Hanover Park
 GREETINGS Morse P. Hershfield
 Junior Past President
 B'nai B'rith District 6
 GREETINGS Eileen Ginsberg
 President, West Suburban Region
 Women's American ORT
 GREETINGS Violet Brown
 President, Women's League
 for Conservative Judaism
 GREETINGS Pamela Bergard
 President, Sisterhood
 Woodfield Jewish Congregation
 RESPONSIVE READING Chana Rosen
 Executive Director, Midwest Region
 United Synagogues of America

Lord of Creation, Father of all beings, we are humbly grateful for the joy of Dedication which unites our hearts today.

Through this synagogue, the work of our hands, we are linked with a glorious past, a vibrant present and a demanding future.

May we be true to the inheritance bequeathed by former generations of prophets, scholars, teachers and martyrs, whose living word and deed made Judaism a Faith of Mercy, Justice and Wisdom.

May we be true to the call of Judaic living in our own day, ever eager to gain knowledge, to act justly, to love kindness and to walk humbly with our God.

May we be granted the courage to face the future confidently, knowing that within ourselves lies the fulfillment of our own best hopes.

We shall come into this House of Prayer seeking God, that our lives may be infused with the Spirit of Holiness.

We shall come into this House of Learning to seek knowledge, that our existence be imbued with beauty and worth.

We shall come into this House of Assembly seeking our fellow man, that we may strengthen the links binding each of us to the other.

Thus may Beh Torah be the focus of all that is good in human life, inspiring us to greatness in everything we do during our journey upon this earth—as parents, as children, as Jews, as Americans and as members of the family of man.

DEDICATORY ADDRESS Rabbi William Frankel
 President, Chicago Board of Rabbis
 ADON OLAM Cantor and Congregation

History of Woodfield Jewish Congregation

אָדון עולם אָשר מַלךְ . בְּטָרם כָּל־יָצִיר וְבָרָא:
 לַעַת נַעֲשֶׂה בְּחַפְצוֹ כָּל . אֲנִי מַלְךְ שְׁמוֹ נִקְרָא:
 וְאַחֲרַי בְּכָלוֹת הַכֹּל . לְבַדּוֹ יִמְלֹךְ נִוְרָא:
 וְהוּא הָיָה . וְהוּא הָיָה . וְהוּא יְהִיָּה בְּתַפְאָרָה:
 וְהוּא אֶחָד . וְאִין שְׁנַי . לְהַמְשִׁיל לּוֹ לְהַחֲבִירָה:
 בְּלִי רֵאשִׁית בְּלִי תַכְלִית . וְלוֹ הָעוֹז וְהַמְשַׁרָה:
 וְהוּא אֱלֹהֵי וְחַי גָּאֵלֵי . וְצוֹר תְּבִלֵי בְּעַת צָרָה:
 וְהוּא נָסִי וּמְנוּס לִי . מְנַת כּוֹסֵי בְּיוֹם אֶקְרָא:
 בְּיָדוֹ אֶפְקִיד רוּחִי . בְּעַת אִישָׁן וְאֶעִירָה .
 וְעַם־רוּחֵי נִוְנְתִי . יְיָ לִי וְלֹא אֵיכָרָא:

BENEDICTION Rabbi Michael Meyers
 Or Chadash Congregation
 Director, Woodfield Jewish Day
 School, Schaumburg, Illinois

RECESSIONAL

OPEN HOUSE

DEDICATION COMMITTEE

Elliott M. Gordon
 Lloyd H. Weston
 Ona Gintzler
 Geri Gurowitz
 Cliff Kelman
 Lynn Taitel
 Sharon Goldberg

In 1971 several dedicated families met to organize a conservative congregation and bring this nation's most prevalent type of Judaism to the northwest suburban area. We began in the basement of a church and within a year Woodfield Jewish Congregation moved to a storefront and assumed the responsibility of a full-time Rabbi. In May 1975, we purchased the building at 6800 Pine Tree Lane, Hanover Park, our present location. Our facilities include a large sanctuary and modern classrooms. With these facilities the northwest suburban community has a conservative congregation with a complete program for the entire family.

Family services are conducted Friday evenings, and on Saturday and Sunday mornings throughout the entire year. These services are led by Rabbi Norman Kleinman and Cantor Gary Sherman and are conducted in both English and Hebrew.

In accordance with the philosophy of the family being the center of Judaism, family seating is observed in the Sanctuary. We encourage the observance of Shabbat and Kashruth. Services are geared to the entire family, to be a learning as well as a ritualistic experience.

The function of the Synagogue is not only to provide instruction in ritual but in the basic concepts of Judaism as well. The people at Woodfield Jewish Congregation feel that rote acceptance of Judaism is not enough to sustain future generations in their everchanging relationship with the rest of the world. Therefore a particular effort is made to relate Judaism to the problems of our times.

The religious school is classified by grades according to age and qualification, beginning with Kindergarten. Upon graduation from Heh (seventh grade) a student is eligible to enter a full five year Hebrew High School program. Bar and Bas Mitzvah training and Shabbat Junior Congregation with interest groups are an integral part of the total school program.

The curriculum includes Bible, history, current events, modern Israel, Talmud, philosophy, rituals, mysticism and conversational Hebrew. A music program is provided for all age levels.

The fully qualified staff is under the direction of Rabbi Kleinman, assisted by a School Principal. Students in the High School Department are involved as Teachers' Aides for the elementary school. A qualified remedial teacher is available to work with exceptional children.

We have been successful in making the learning experience an enjoyable one for our students. Field trips to places of Jewish interest, outings, assemblies, etc. contribute to this purpose.

Woodfield Jewish Congregation is an active participant in the religious and cultural life of the community, both Jewish and Non-Jewish. We participate with our fellow congregations in joint Yom Ha Atzmaut Services and in the communal Thanksgiving observances.